

All-metal blind

GM 200

Model 1650

Recess dimensions

hl	p	hs	tn	
< 900	215	230	120	
901-1,000	230	245		
1,001-1,250	250	265		
1,251-1,500	275	290		
1,501-1,750	305	320		
1,751-2,000	330	345		
2,001-2,250	360	375		
2,251-2,500	380	395		
2,501-2,750	410	425		
2,751-3,000	435	450		
3,001-3,250	455	470		
3,251-3,500	485	500		
3,501-3,750	510	525		
3,751-4,000	535	550		120

Measurements in mm

Maximum dimensions

	single		coupled	
	manual	motor	manual	motor
Min. hl	0.6 m	0.6 m	0.6 m	0.6 m
Max. hl	4.0 m	4.0 m	4.0 m	4.0 m
Min. bk	0.6 m	0.6 m		
Max. bk	2.8 m	2.8 m		
Max. area	6.5 m ²	6.5 m ²	6.5 m ²	20 m ²
Max. number			3	4

Sizes beyond these dimensions are available upon request.

All technical documents are also available in 1:1 scale.

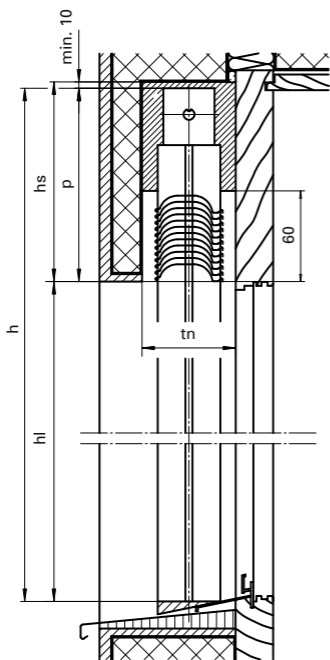
Colours can be selected from our colour chart.

Recess dimensions are theoretical values. For technical reasons they can vary in the plus or minus range.

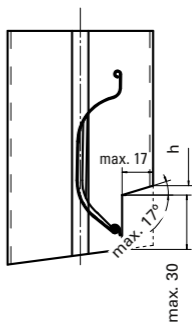
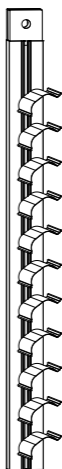
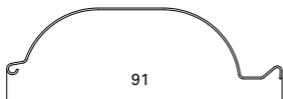
Performance in accordance with SIA standard 342.

Do not operate in the presence of snow and ice.

For automatic controllers we recommend the installation of a frost-activated sensor.



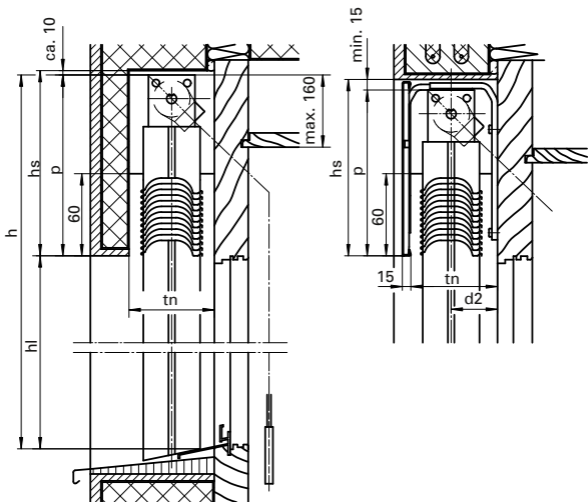
Slat



Release and diagonal cut
available at extra cost

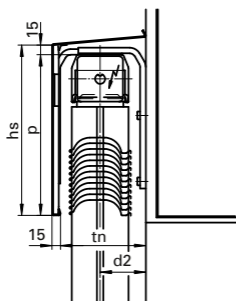
Max. release so that the blind
can be lowered completely

GM 200 installation examples

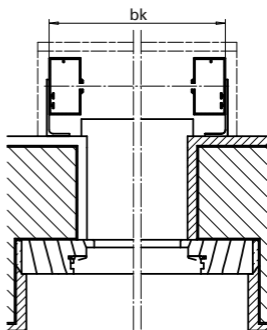


Installation with canopy

Motor drive

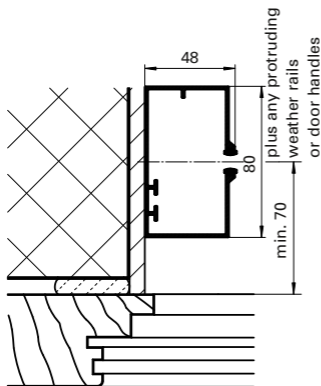


Vertical section

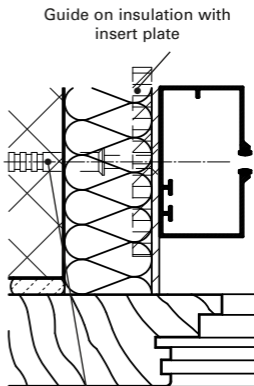


Horizontal section

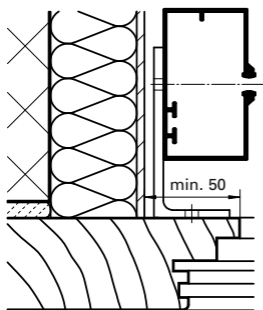
GM 200 guide attachment



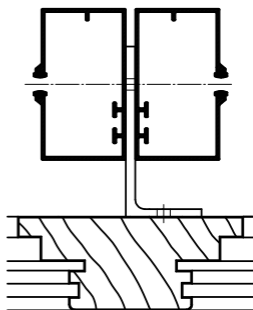
Guide on plaster



Guide on insulation (max. 100 mm) with special dowel screw



Guide with holder on window frame for insulated facade



Dual guide with holder